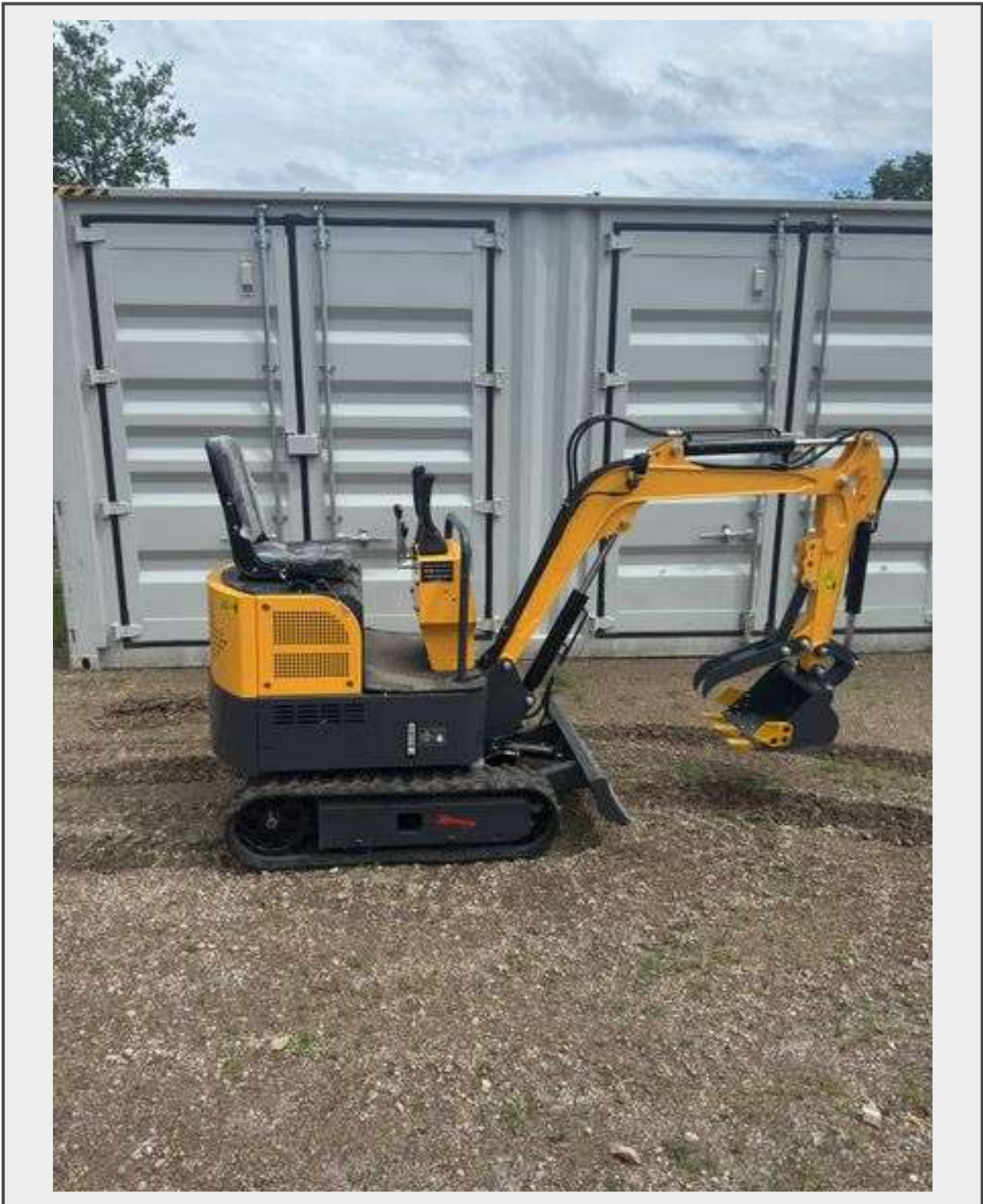


Sale Name: SEMO July New Equipment Auction

LOT 5126 - LANDHERO LDH-KV16 MINI EXCAVATOR



Year 2025

Description

Specifications Engine: Pericom EPA Gasoline Engine Weight: 2000 Lbs Bucket Capacity: 26.4 Qt Working Device Mode: Back Hole Power: 13.5 Hp Tyre Gauge: 30.3 In Track Length: 43 In Platform Ground Clearance: 15 In Rear-End Swing Radius: 28.9 In Width

of chassis: 33-41 In Width Of Track: 7 In Height Of Track: 12.6 In Over Length: 100.4 In
Machine Height: 52.4 In Max. Lifting Height Of Dozer Blade: 12.8 In Max. Lifting Depth
Of Dozer Blade: 6.9 In

Year 2025

Quantity: 1



<https://bids.westcentralauctionco.com/>